

# SOLUTION

## HOTEL

### Best Western, Heronston Hotel

The Best Western, Heronston Hotel in Bridgend was already a Green Tourism Silver Award winning hotel, but now it has upped its game in pursuit of the Gold Award. Deputy Manager, Mark Burgess is also the hotel's environmental officer and leapt at the opportunity to save Best Western money and improve its carbon footprint. The hotel is also reducing labour hours and getting back much needed space.

So how did Mark achieve this? Heronston was already renting two small QCR balers but the hotel had outgrown these as business increased. A free upgrade later and the hotel now has a QCR baler, glass crusher and general waste bin compactor in the waste area.



QCR is a leading distributor of innovative waste and recycling equipment from premier manufacturers. We offer rental and purchase options on balers and compactors for a wide range of materials.

With a QCR solution you can reduce your waste amount by up to 90%, cutting the amount of bins you require and lowering your waste and disposal costs, all whilst keeping a tidy and safe workplace.

**Choose QCR to help you SAVE MONEY ON WASTE.**

#### MULTI-WASTE SOLUTION

- All of the hotel's cardboard waste is baled in the QCR H3 baler. No loose cardboard has to enter bins.
- All empty glass bottles are crushed in the QCR GC140. Volume is reduced 5:1, allowing for lower cost and fewer bin collections.
- The QCR 1100 bin compactor reduces general waste volume 3:1 - again, costs and collections have been reduced.
- QCR allow all rental customers to upgrade at anytime for free, Heronston Hotel has taken full advantage of this.
- All cardboard bales are removed by a local recycler.
- The green credentials of the hotel are very high - award winning worthy.
- Lastly, hotel guests are greeted with a clean, environmentally friendly place to stay.

#### CUSTOMER QUOTE

##### Deputy Manager, Mark Burgess

"Since getting the 3 machines we have saved on space, money and manhours. We're also doing the right thing for the environment, reducing our carbon footprint and recycling wherever possible. The service, training and quality of machines was exactly what I expected from QCR having already been a customer of theirs for over 5 years. Exceptional service!"



Left to right: GC140 glass crusher, H3 baler and 1100 bin press

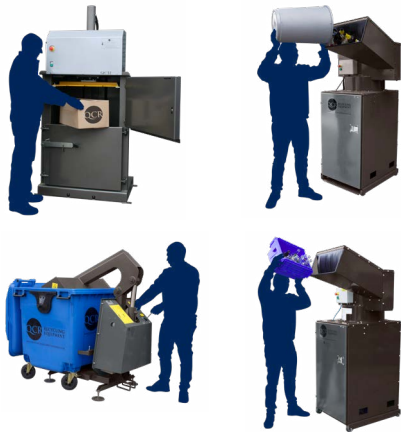


**SAVE MONEY ON WASTE: CALL 01242 620903**

BALERS • SHREDDERS • COMPACTORS • CONSUMABLES • GLASS CRUSHERS/IMPLODERS  
CLINICAL WASTE DESTRUCTION • RENEWABLE ENERGY • EQUIPMENT PARTS • SERVICING & TOTAL WASTE SOLUTIONS

# CARDBOARD, GLASS & GENERAL WASTE

QCR H3 baler



## FEATURES

- Simple to operate and maintain
- Semi automatic operation
- Bale many different materials
- Low loading height
- Produces compact bales
- Hydraulic

## OPTIONAL EXTRAS

Plastic bag stand



## MACHINE DATA

### MACHINE DIMENSIONS

Overall height 2188mm  
Overall width 1065mm  
Overall depth 722mm

### BALE SIZE

Overall height 700mm  
Overall width 745mm  
Overall depth 500mm  
Bale tie 9mm banding

### BALE WEIGHT

up to 50kg - cardboard  
up to 70kg - plastic

### GENERAL

Compaction 5,026kg  
Cycle time 47 seconds  
Weight 380kg

QCR GC140 glass crusher



## FEATURES

- 5:1 volume reduction
- Takes 140 litre bin
- 680 bottles per bin
- Up to 2 tonnes per hour
- Mobile for ease of movement
- Low noise operation
- Highly energy efficient
- Reduce waste collection costs
- Optional dust extraction system
- Suitable for bottles in excess of 1 litre
- Bin full light

## MACHINE DATA

### GENERAL

Electrics 220/230v single phase  
Machine weight 185-206kg  
Full bin weight 80-90kg (approx)

### MACHINE DIMENSIONS

Overall height 1920mm  
Overall width 840mm  
Overall depth 1060mm  
Feed aperture width 520mm

QCR 1100 bin press



## FEATURES

- Swift two handed control system
- 1.5kW motor
- Emergency stop
- 3:1 volume reduction

## SUITABLE FOR

- Cardboard
- Plastic
- Wet waste
- Dry waste

## MACHINE DATA

### MACHINE DIMENSIONS

Max height 2245mm  
Overall width 955mm  
Overall depth 1410mm  
Transport height 1635mm  
Weight 285kg

### GENERAL

Compaction force 4 tonnes  
Cycle time 30 seconds  
Power Single phase



## CONTACT DETAILS

01242 620903

01242 620873

info@qcr.co.uk

www.qcr.co.uk

QCR Recycling Equipment  
Quercus House  
Orchard Industrial Estate  
Toddington, Cheltenham  
Gloucestershire, GL54 5EB

The policy of QCR is one of continuous improvement and development, therefore specifications are subject to change without notice.

# SAVE MONEY ON WASTE: CALL 01242 620903

BALERS • SHREDDERS • COMPACTORS • CONSUMABLES • GLASS CRUSHERS/IMPLODERS  
CLINICAL WASTE DESTRUCTION • RENEWABLE ENERGY • EQUIPMENT PARTS • SERVICING & TOTAL WASTE SOLUTIONS